

Revised August 2015

# Massachusetts Music Educators Association

## Jazz Bass Trombone Scales

♩ = 100

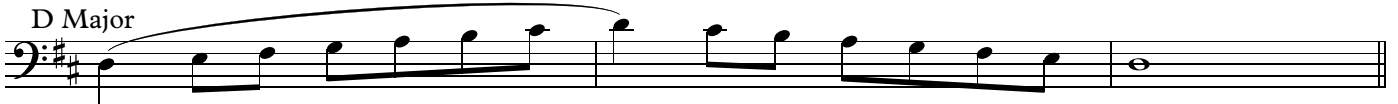
E Major



A Major



D Major



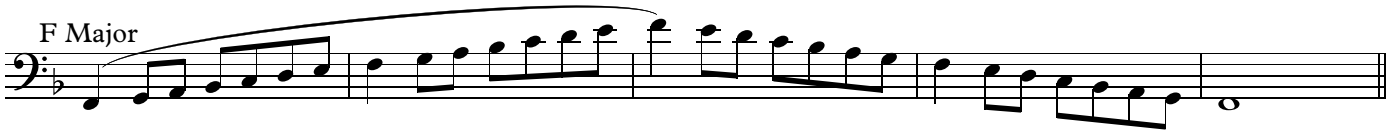
G Major



C Major



F Major



Bb Major



Eb Major



Ab Major



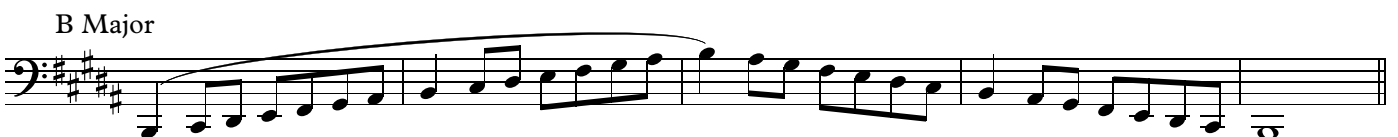
Db Major



Gb Major



B Major



c# harmonic minor



f# harmonic minor



b harmonic minor



e harmonic minor



a harmonic minor



d harmonic minor



g harmonic minor



c harmonic minor



f harmonic minor



bb harmonic minor



eb harmonic minor



ab harmonic minor



Chromatic

Two staves of chromatic scale exercises. The first staff features a continuous chromatic scale from B1 to B4, with triplet markings (3) above groups of three notes. The second staff continues the chromatic scale with various rhythmic patterns and triplet markings.

Concert C Dorian

A single staff of music for Concert C Dorian mode, showing a descending scale from C4 to C3.

Concert C Lydian

A single staff of music for Concert C Lydian mode, showing a descending scale from C4 to C3.

Concert C Mixolydian

A single staff of music for Concert C Mixolydian mode, showing a descending scale from C4 to C3.